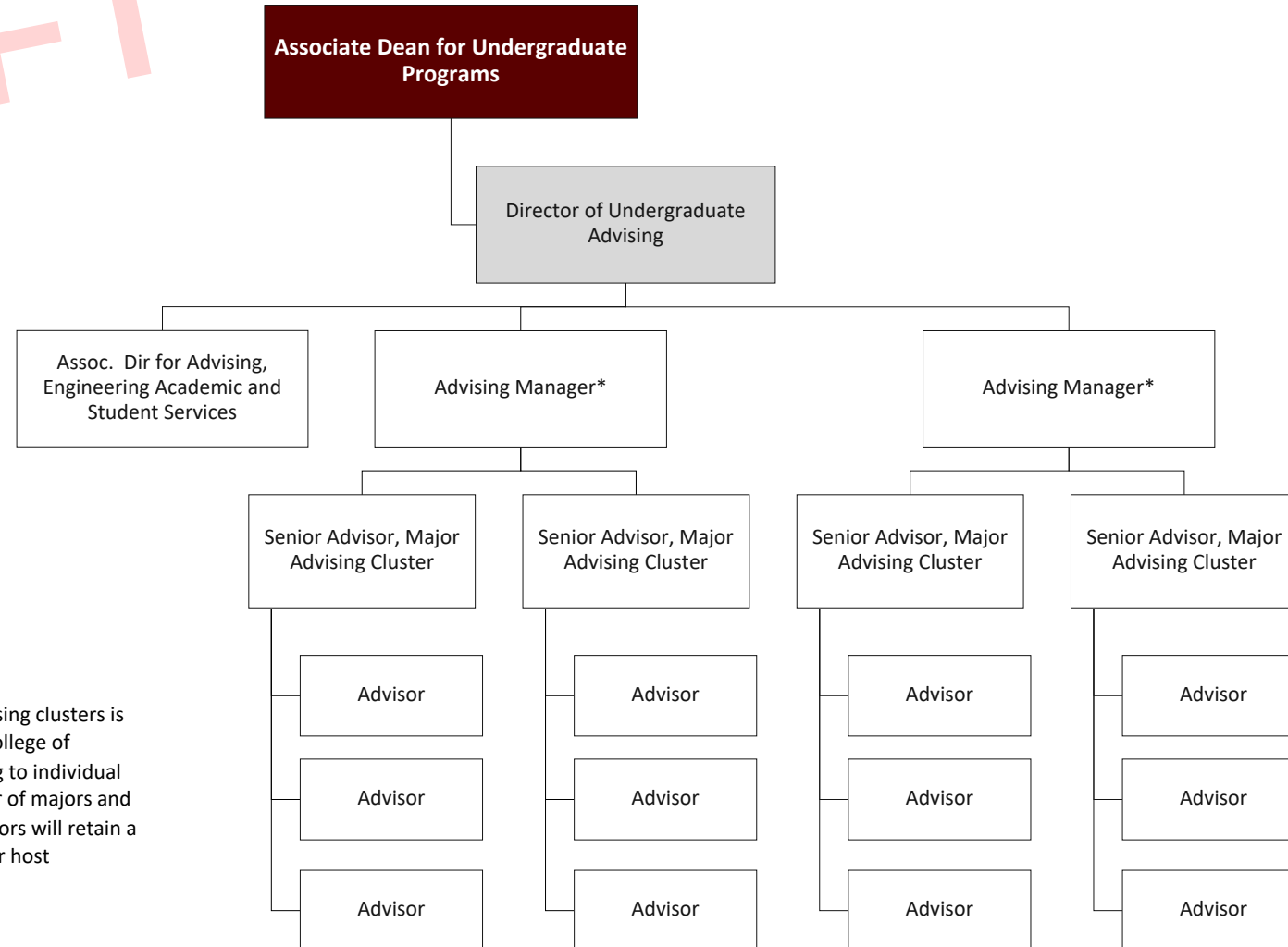




Chart 1 - Undergraduate Academic Advising

DRAFT



\*The number of advising managers and major advising clusters is being determined by a working group within the College of Engineering. The number of staff advisors reporting to individual senior advisors may vary depending on the number of majors and students served by that advising cluster. Staff advisors will retain a dotted-line report to a faculty administrator in their host department.



Chart 2 - GV Undergraduate Advising

DRAFT

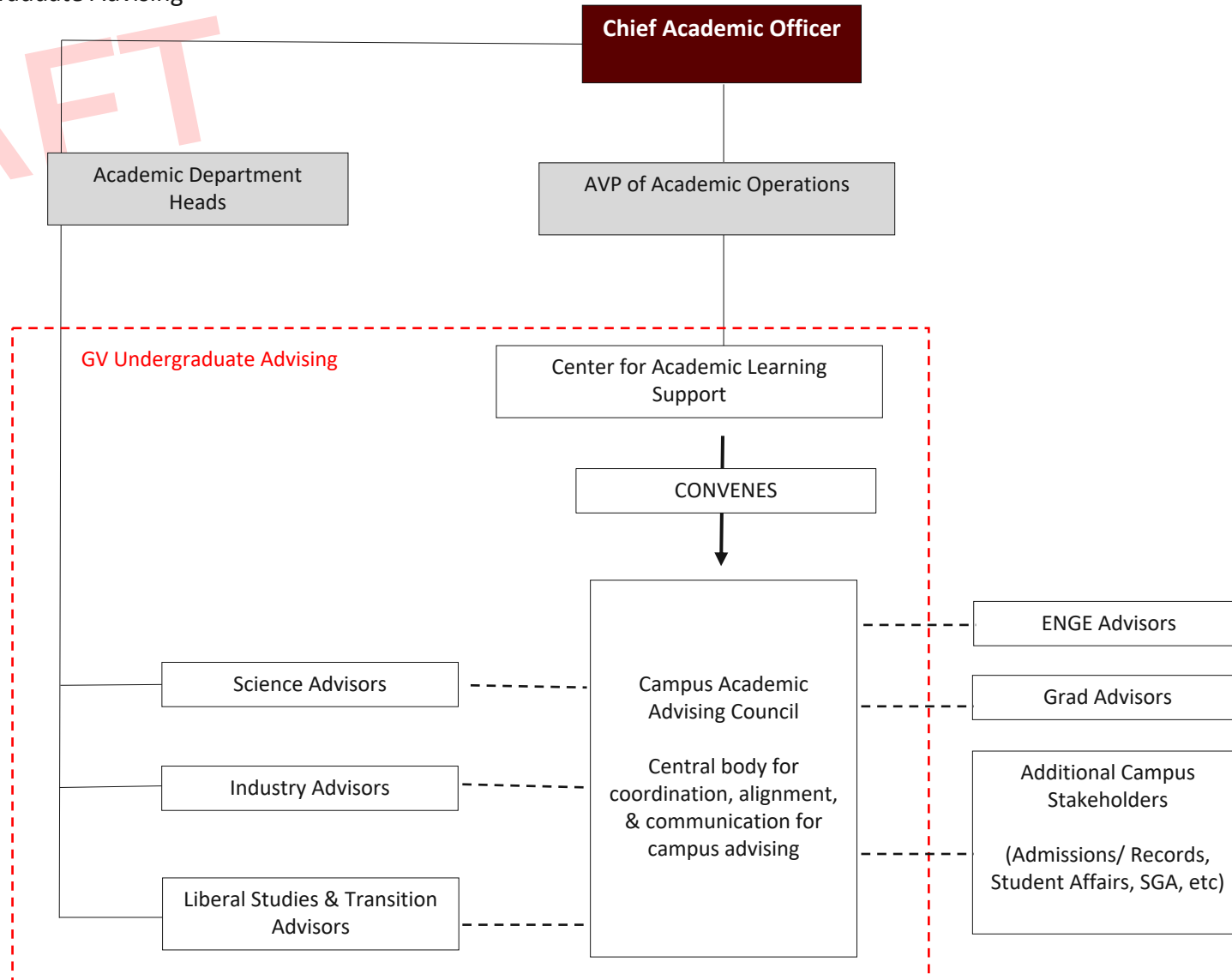
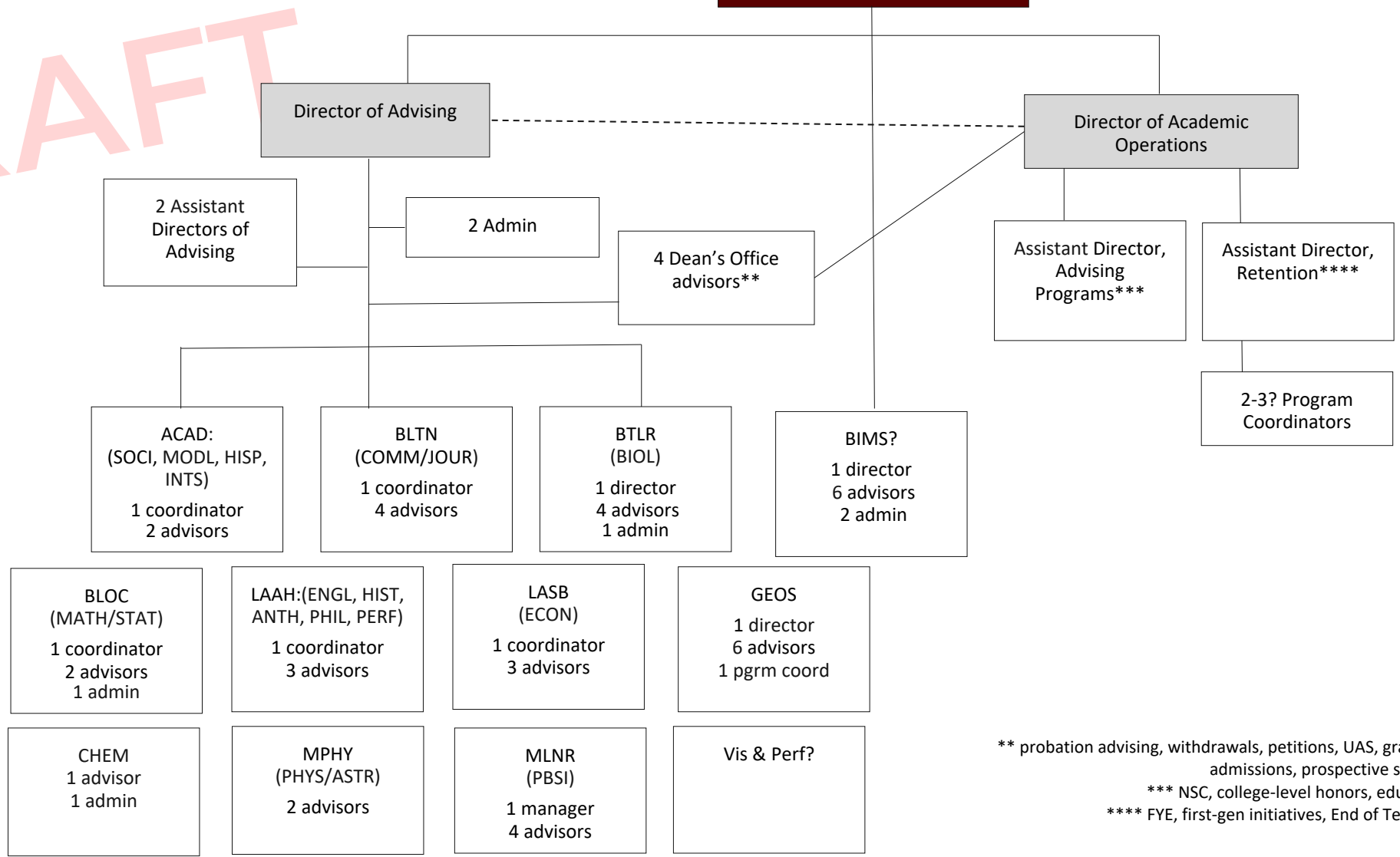




Chart 1

DRAFT

Associate Dean, Undergraduate Programs



\*\* probation advising, withdrawals, petitions, UAS, graduation clearance, admissions, prospective student recruitment  
 \*\*\* NSC, college-level honors, education abroad, etc.  
 \*\*\*\* FYE, first-gen initiatives, End of Term, Early Alert, etc.



Chart 2

DRAFT

